

© 2008 ENGINEERED PLASTICS  
 CONFIDENTIAL AND PROPRIETARY DOCUMENT  
 ANY ONE OR MORE OF THE FOLLOWING  
 PATENTS MAY APPLY  
 U. S. PATENT NO. 5,303,669, 5,775,835,  
 6,449,790, AND 6,895,622 B2  
 C.D.N.: PATENT NO. 2,032,532, 2,070,984  
 US PATENTS PENDING.  
 Ⓣ KENNETH E. SZEKELY

**MATERIAL LIST**

ITEM	DESCRIPTION	PART NO.	QTY

**REFERENCE DRAWINGS**

DMG. NO.	DESCRIPTION
ADG-249606	STANDARD PANEL
ADG-368806	END RETURN PANEL


No.	DATE	REVISION	APPR.
1	06/14/06	GENERAL REVISION	JLD
2	12/18/06	HOLE DIAMETER CHANGE-ANGLE	JLD
3	12/07/07	L ANGLE REVISION	JLD



SCALE AS NOTED

DESIGNED BY	K.E.S.	DATE	11/10/04
DRAWN BY	D.G.	DATE	04/10/06
CHECKED BY		DATE	

PROJECT MANAGER	PART NO.
	SEE MATERIAL LIST

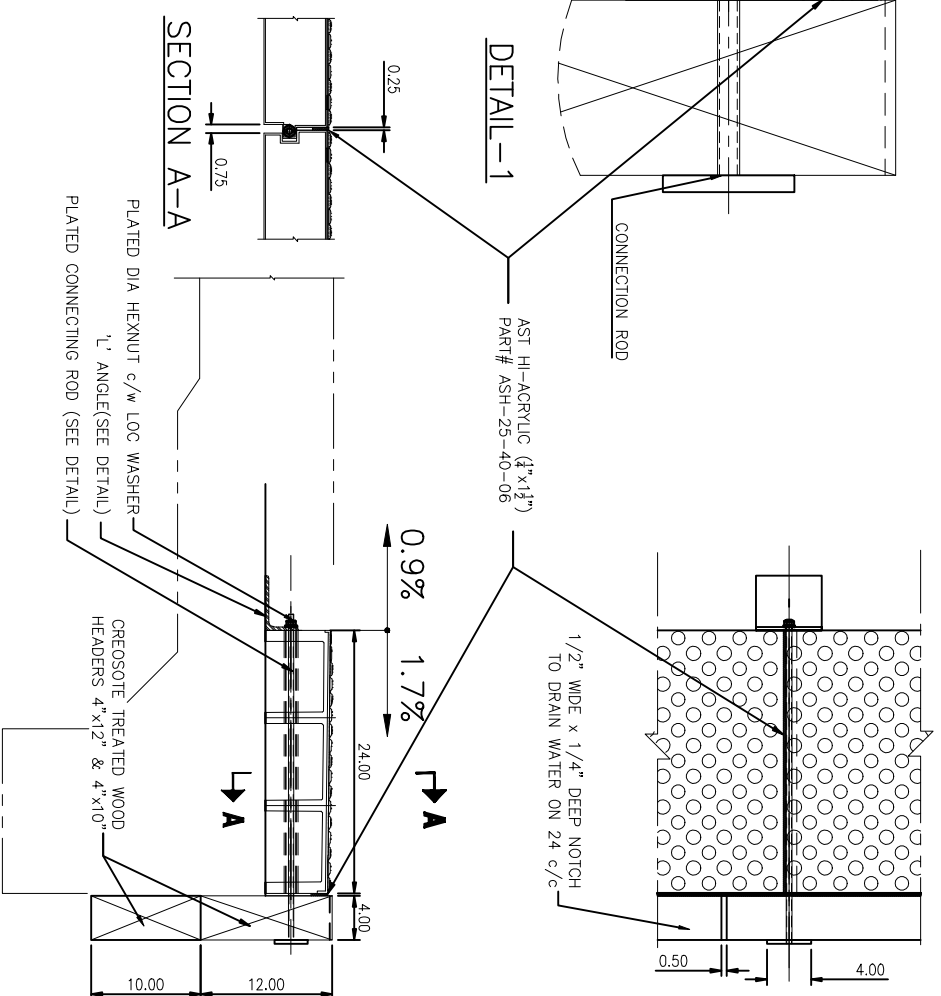
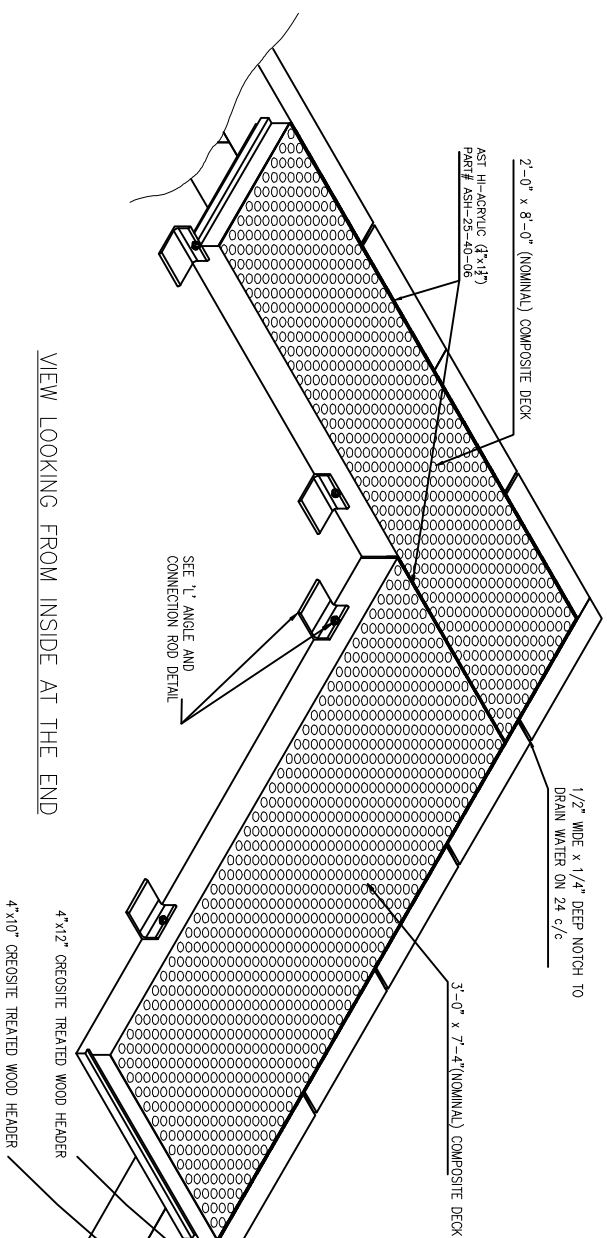
TRADE	STRUCTURAL COMPOSITE
MATERIAL	VITRIFIED POLYMER COMPOSITE

SUBJECT  
 STRUCTURAL COMPOSITE PLATFORM PANEL  
 WITH ARMOR-TILE DETECTABLE  
 WARNING SURFACE SYSTEM

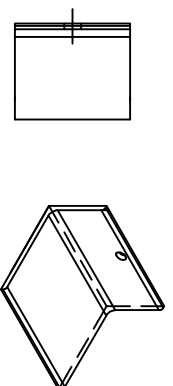
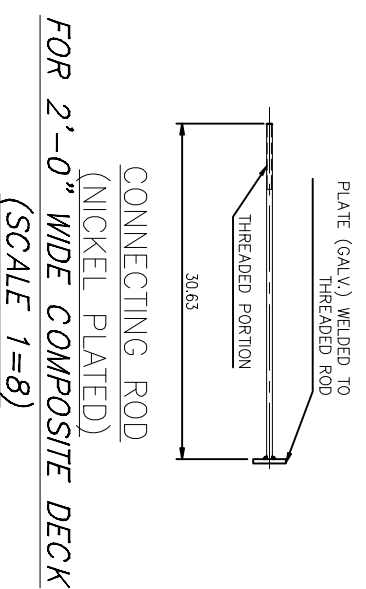
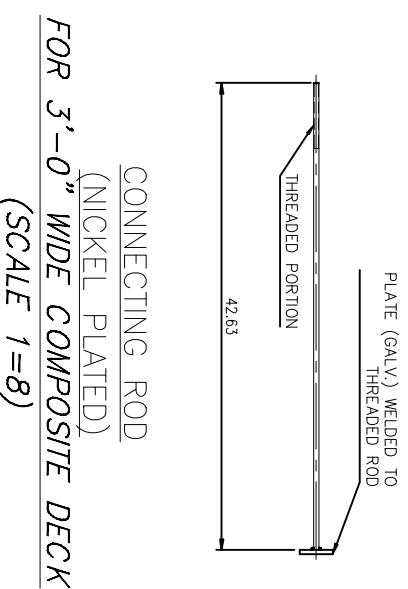
PROJECT

**2'-0" AND 3'-0" ABUTMENT  
 TYPICAL JOINT BETWEEN  
 ARMOR-DECK  
 AND ACCESSORIES**

DRAWING NO.	SHT. NO.	REV. NO.
ADG-D01	01	3



SECTION THROUGH THE JOINT (SCALE 1=8)



VIEW LOOKING FROM INSIDE AT THE END

